



8 Richards Road CAMP MOUNTAIN, QLD



4



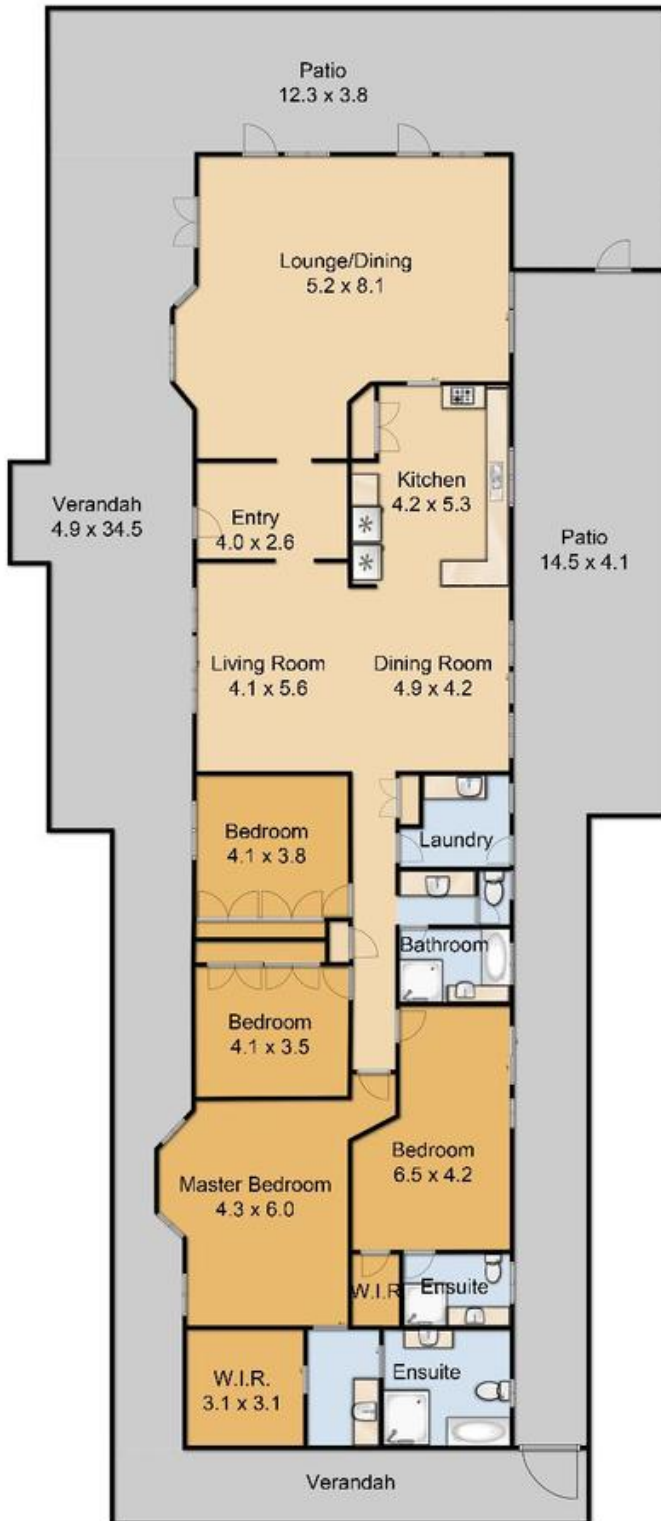
3



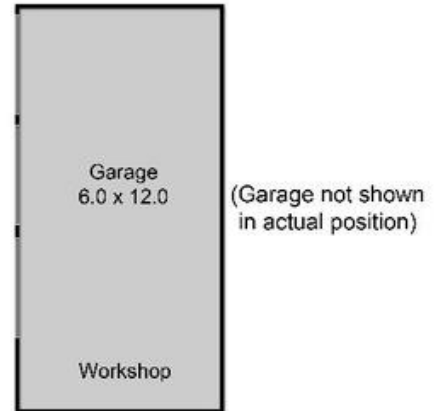
3

### Privately positioned, spacious family entertainer on horse friendly acreage

Lifestyle - Spacious family living in sought after Camp Mountain. Privately positioned, elevated, yet level, horse friendly 4.5 acres With the Pony Club on the doorstep, walking distance to Steiner School and 4 minutes to the primary school, as well as Samford Village shops and cafes.



FLOORPLAN



SITEPLAN

### 8 Richards Road, Camp Mountain

Scale in metres. Indicative only. Dimensions are approximate. All information contained here in is gathered from sources we believe to be reliable. We cannot guarantee its accuracy and interested persons should verify it.